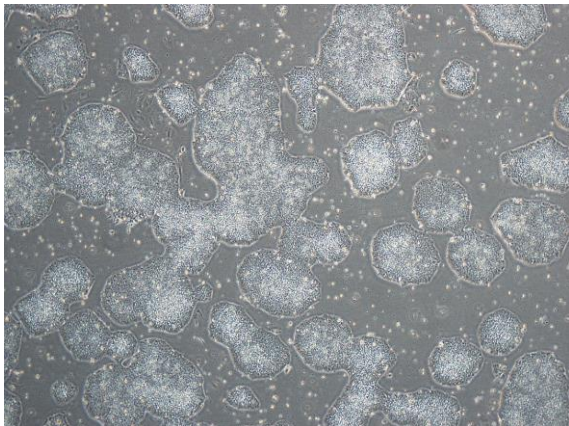


【 CiRA-j-1003 】 Morphology of iPSC colonies

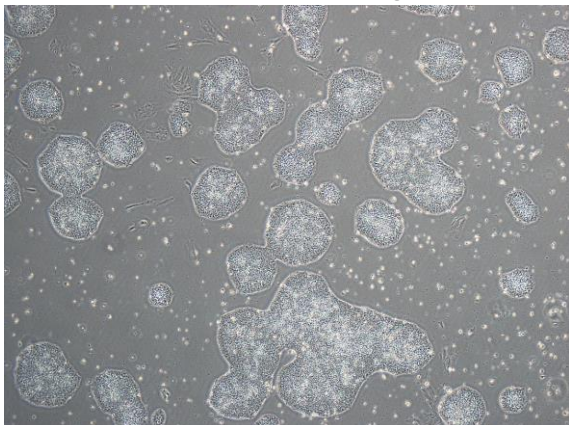
CiRA-j-1003-A: passage-2



CiRA-j-1003-B: passage-2



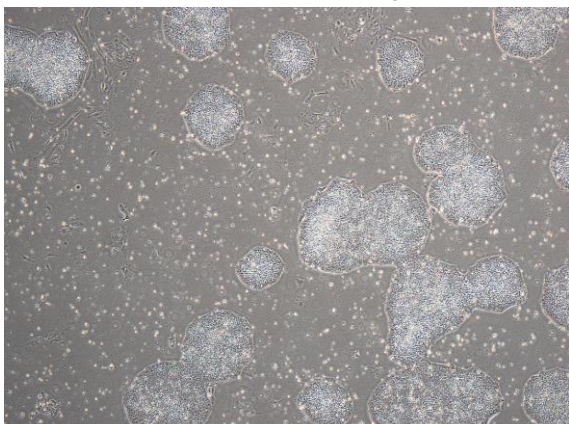
CiRA-j-1003-C: passage-2



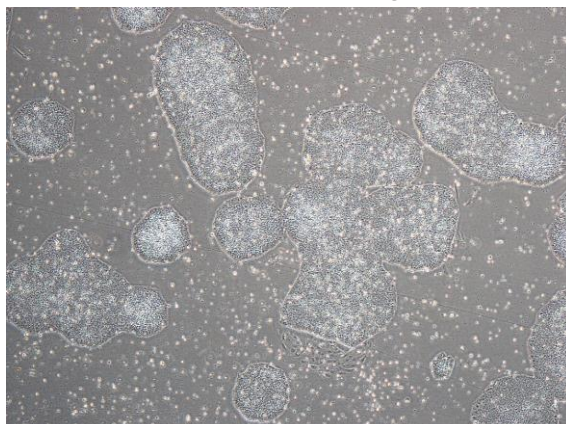
CiRA-j-1003-D: passage-2



CiRA-j-1003-E: passage-2



CiRA-j-1003-F: passage-2



(All images were captured at 4x magnification)